

# 20 SHEPHERD'S KNOLL

Pebble Beach



**CARMEL REALTY COMPANY**  
ESTABLISHED 1913

— A Cornerstone in Luxury Real Estate for Over 100 Years —

PROPERTY DETAILS



APPROX. SQ. FOOTAGE

3,078 sq. ft.

BEDROOMS

Three

PRICE

\$1,350,000

APPROX LOT SIZE

1817 sq. ft.

BATHROOMS

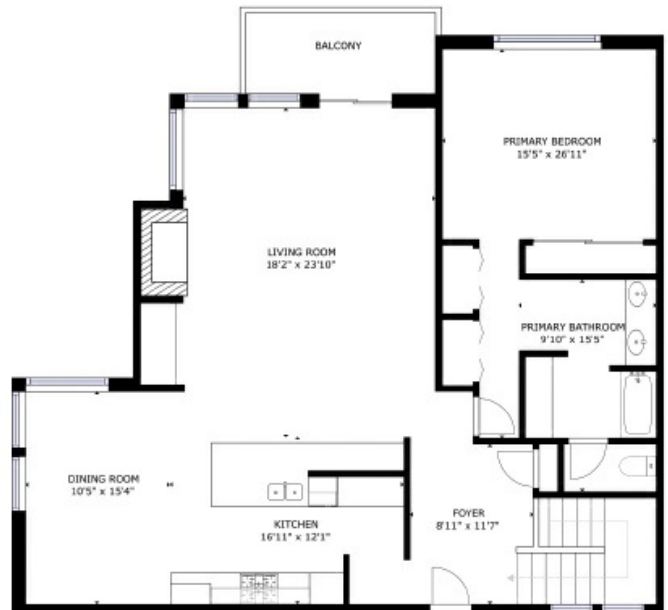
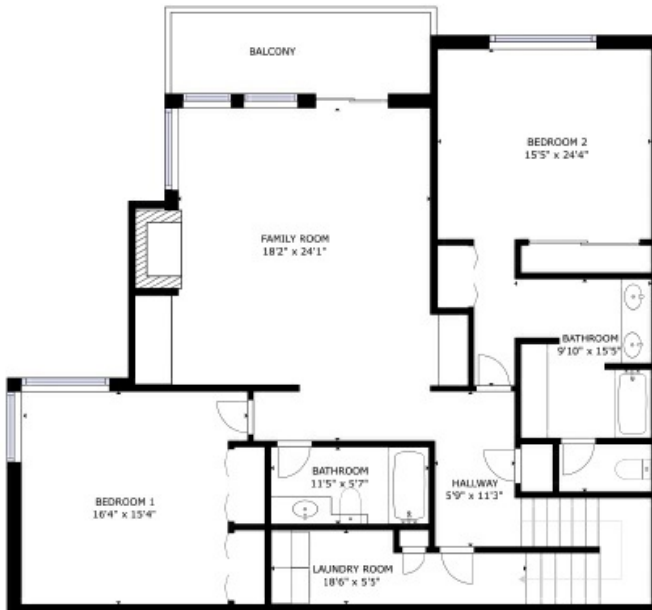
Three

WEBSITE

20ShepherdsKnoll.com

PROPERTY DESCRIPTION

**T**his gracious nearly 3,000-square-foot, three-bedroom, three-bath condo in the gated community of Shepherds Knoll in Pebble Beach is one of only two units of this size in the complex and has recently undergone a remodel. Two balconies offer peeks of the Monterey Bay, and this quiet, two-story end unit is surrounded by the peaceful forest views. The flowing open floor plan features a master suite on the main level, and an additional master suite and third bedroom and bathroom downstairs. There is a living area with a gas fireplace on each level, with marble, carpet, maple hardwood and tile flooring throughout. Upstairs offers an open eat-in kitchen with plenty of countertops for cooking and entertaining. The downstairs also has a laundry room with storage and a wet bar. The unique and spacious layout creates privacy for residents and guests. The unit has a dedicated carport, with additional open parking, and the central location provides convenient access to all areas of the Peninsula.



*Square footage, acreage, and other information herein may have been received from a variety of sources and has not been verified. If important to buyers, buyers should conduct their own investigation.*

CONTACT INFORMATION

**Jamal Noorzoy**

831.277.5544

Jamal@CarmelRealtyCompany.com

DRE# 01119622

**Renee Catania**

**Monterey Coast Realty**

831.293.3668

reneec@montereycoastrealty.com

DRE# 01954589

WWW.CARMEALREALTYCOMPANY.COM



**CARMEL REALTY COMPANY**  
ESTABLISHED 1913



Dolores South of Seventh ■ P.O. Drawer C  
Carmel-by-the-Sea, California, 93921  
Office: 831.622.1000 ■ Fax: 831.624.7338